
Fingerprint Flash Drive

User's Manual



Table of Contents

1. Before You Start.....	1
1.1For Users	1
1.2Parameter and Compatible Systems	2
2. DM Fingerprint Management Application.....	2
3. Registration For Administrators.....	3
3.1 To Set Password for Administrator	3
3.2 To Enroll Fingerprint for Administrator	3
4. Usage of Fingerprint Flash Drive	4
5. Partition of Flash Drive	4
6. Managing Administrator and Users' Accounts.....	5
7. Managing Password	6
8. Q & A.....	7

1. Before You Start



1.1 For Users

Dear Users, thank you for purchasing DM Fingerprint USB Flash Drive. It is an integration of biometric identification technology and data storage. Designed for those demanding the highest level of data protection, the drive can safeguard sensitive data against unauthorized access attempts with fingerprint authentication. Data stored in the secure partition are safely protected and can only be accessed when the scanned fingerprint is authenticated. Featuring convenience and top-class security, it not only spares you the trouble of memorizing long passwords, but also brings you a peace of mind.

1.2 Parameter and Compatible Systems

Fingerprint: It can save up to 6 fingerprints: 1 for administrator, 5 for users.

Compatible Systems for Memory Function: Windows XP+SP3, Vista, Windows 7, Windows 8, Windows 8.1, Windows 10, Linux, Mac.(Can recognize the fingerprint and unlock the secure partition)

Management Software Supported Systems: Windows XP+SP3, Vista, Windows 7, Windows 8, Windows 8.1, Windows 10.

2. DM Fingerprint Management Application

When using Flash Drive for the first time, please run a built-in application that comes with your device on your computer. This application is designed to set password and enroll fingerprints, manage users whose accounts are registered, and prevent your personal data from getting hacked and misused.

To run the fingerprint management application on your computer:

- a. Attach Flash Drive to an available USB port on your computer and device should be recognized automatically.
- b. Click “CD Drive(G): DM” in the window of “My computer”
- c. Double click the app icon “Finger Tool.exe” to run the application.

Note: Some security software may misunderstand and forbid the operation, please set to allow the operation.

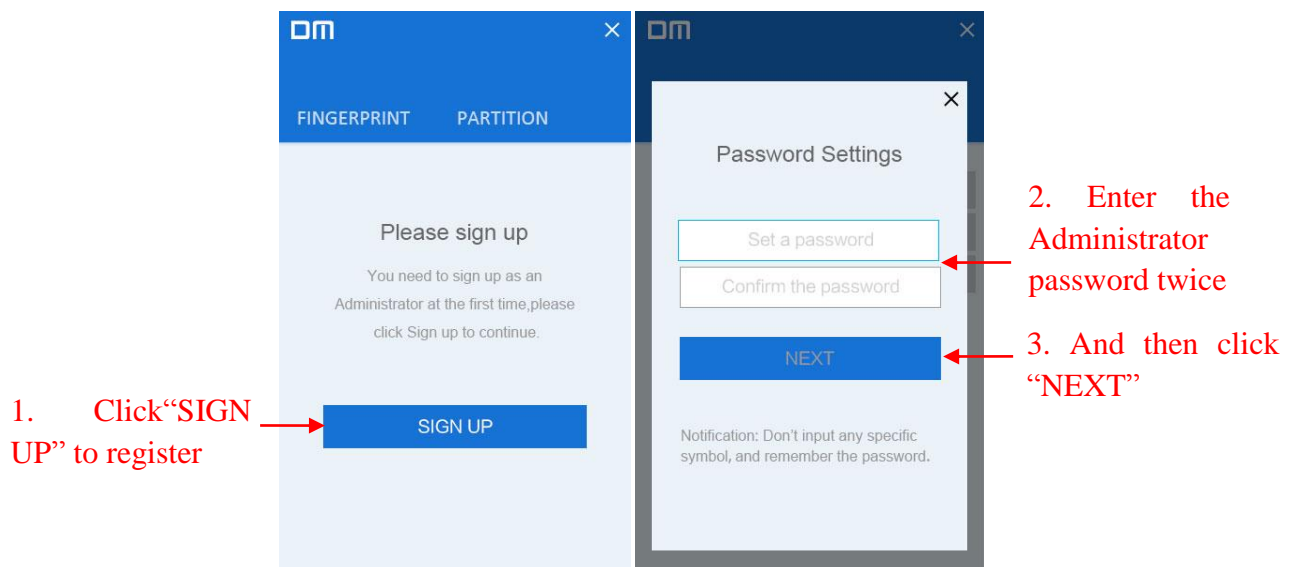


3. Registration For Administrators

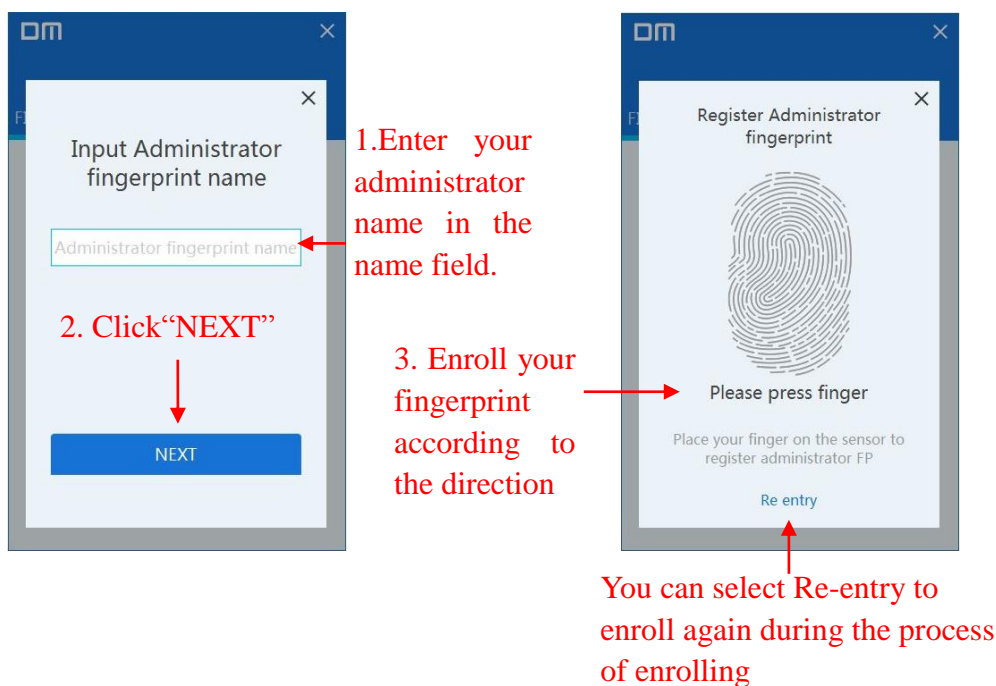
Only when the registration of administrator's account is complete, you as an administrator can create accounts and enroll fingerprints for general users.

This chapter explains how to register password and fingerprint for administrator.

3.1 To Set Password for Administrator



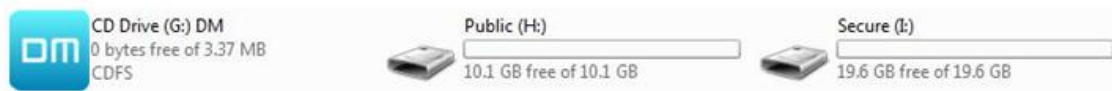
3.2 To Enroll Fingerprint for Administrator



Note: We suggest you slightly change the angle of your finger for every attempt, allowing the system to store fingerprints of the pad, both sides, and tip of your finger. Repeat the step for 6 times until the scan of your fingerprint is completed.

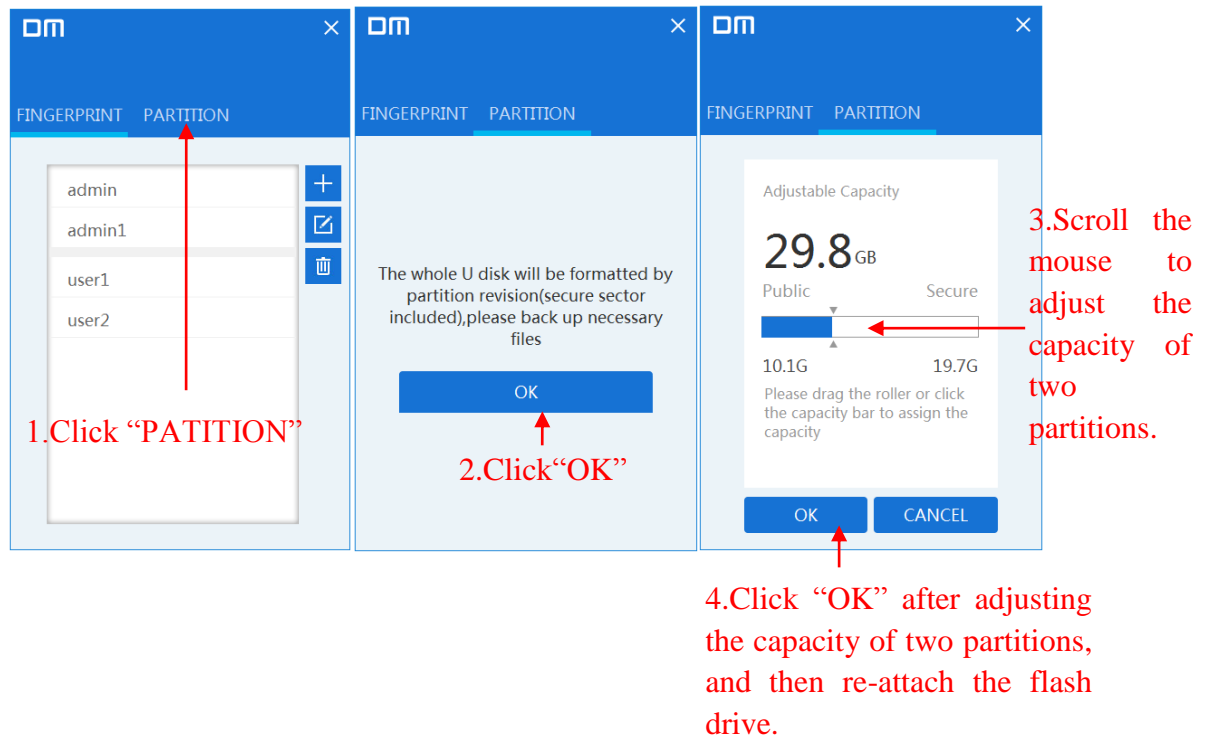
4. Usage of Fingerprint Flash Drive

- a. Attach Flash Drive to an available USB port on your computer and the device should be recognized automatically.
- b. Place your finger(the one had been enrolled) on the fingerprint sensor with light and even pressure. You will see the pilot lamp flashes. When the fingerprint is authenticated, you can see the secure partition and access the data stored in this partition. As shown below. “Secure” represents for secure partition.



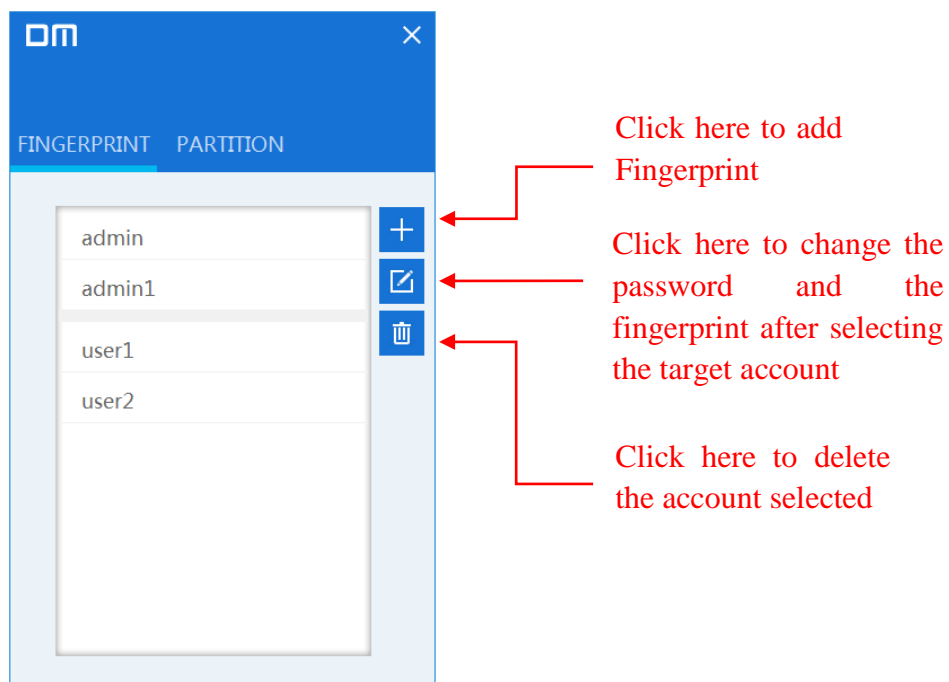
5. Partition of Flash Drive

- a. Run the application “DM”, and apply the Administrator’s fingerprint to pass the authentication and then click “PARTITION”.
- b. Click “YES”.
- c. Scroll the mouse to adjust the capacity of the public partition and the secure partition, click “YES” to confirm the adjustment. Please re-attach the flash drive after finish the partition.



6. Managing Administrator and Users' Accounts

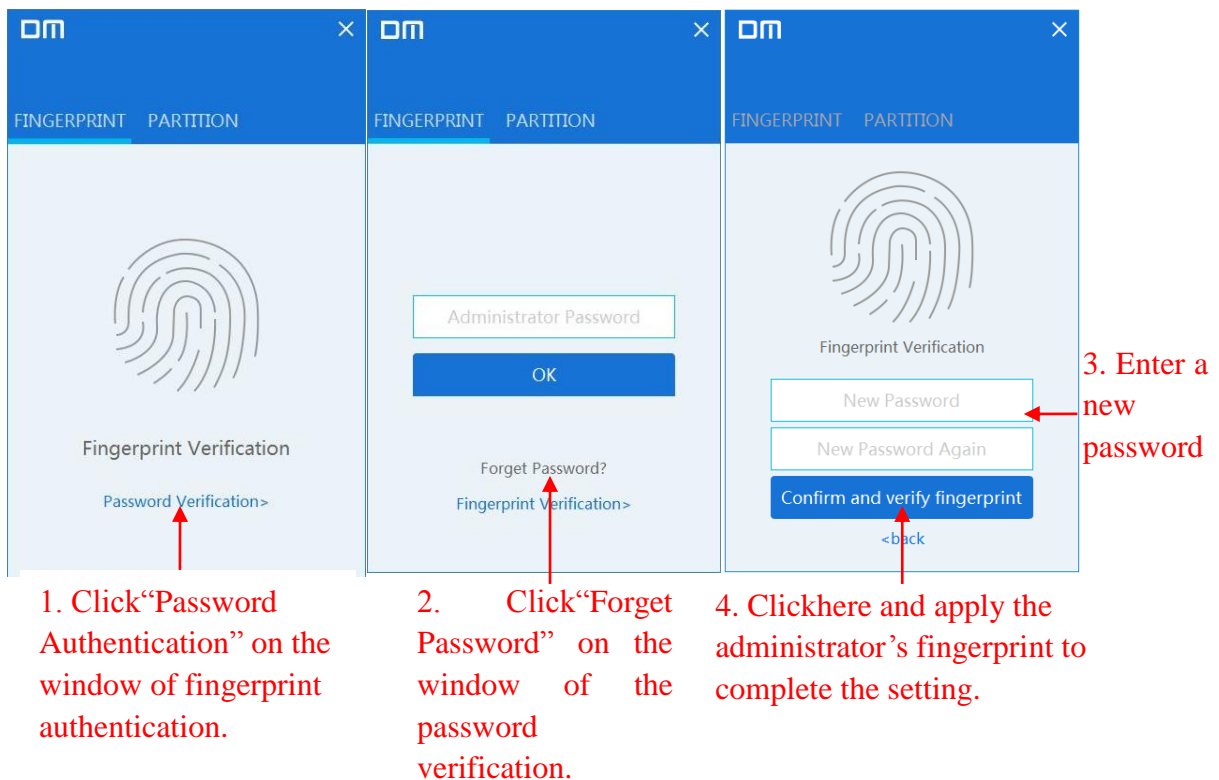
This chapter explains how to add, change, delete, and edit the accounts.



(Note: You should keep at least one fingerprint of the administrator.)

7. Managing Password

- Click “Password Authentication” on the window of fingerprint authentication.
- Click “Forget Password” on the window of the password authentication.
- Enter a new password.
- Click “YES” and apply the administrator’s fingerprint to complete the setting.



8. Q & A

8.1 Why does the flash drive cannot be recognized?

Please re-attach the flash drive and run the application all over again.

8.2 Can't access the secure partition after placing the finger on the fingerprint sensor for several times?

Your fingerprint may not be read by the device if your finger is too wet. If the problem occurs, please dry your finger. Re-attach the flash drive when it still doesn't work. If the computer connects with Bluetooth receiver or other device, please disconnect them with the computer and try placing finger again.

8.3 Why does the flash drive only have 10GB or 20GB in capacity?

The available capacity of the 32GB flash drive is 29.6GB, the default capacity of public partition is 10GB. The available capacity of the 64GB flash drive is 58.6GB, the default capacity of public partition is 20GB. Users can see the default capacity of the secure partition only when their fingerprints are authenticated.

8.4 Does the fingerprint flash drive apply to the OTG smart phone?

Only the public partition can be accessed via the OTG smart phone.

8.5 Why do files larger than 4G cannot be saved in the flash drive?

The initial format of Flash Drive is FAT32, you need to format it into exFAT when transmitting files larger than 4GB.

8.6 What are the compatible systems for fingerprint application?

The fingerprint application can be operated in device with Windows XP, windows 7, windows 8, windows 10 systems.

8.7 What is encryption principle of the DM fingerprint flash drive?

Based on the AES256 method, the fingerprint data is saved in the flash drive with an exclusive UID produced by FP IC. Since the computing method of fingerprint data and fingerprint is separate, the data saved in the secure partition will be lost if the flash drive is dismantled by force.

8.8 If the times for entering incorrect administrator password are unlimited?

If the user enters incorrect password for more than 254 times continuously, the Flash Drive would start the process of self-destruction, all data in the USB flash drive will be erased, and the Flash Drive could get recovered only by downloading firmware again.